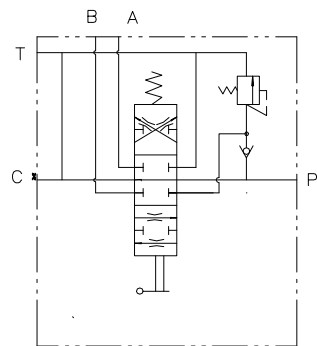


液压原理图



Technical requirements:

1. Rated flow rate: 40L/min, maximum flow rate: 55L/min;
2. Maximum working pressure: 25MPa;
3. Safety valve setting pressure: 20MPa;
4. Each moving part must be flexible and free from any sticking or jamming;
5. Oil port size: P, A, B, T, C oil ports are all G1/2; Invert the orifice at an angle of 1X45°;
6. Each inlet and outlet should be sealed with plastic oil plugs to prevent dust;
7. The form, length, and color of the handle cover are determined according to user requirements.

设计	制图	审核	工艺检查	标准化检查	图样标记	重量	比例	P40-0T
					共张	第张		
标记	更改内容或保准	更改人	日期	审核				多路阀 外型尺寸图