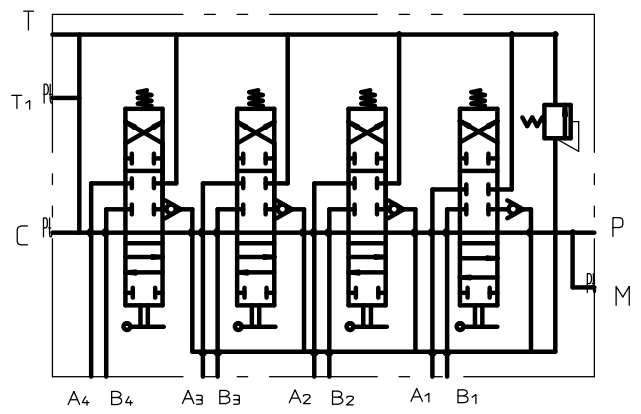


液压原理图



Technical requirements:

1. Rated flow rate: 80L/min
2. Maximum working pressure: 25MPa;
3. Safety valve setting pressure: 20MPa;
4. Each moving part must be flexible and free from any sticking or jamming;
5. Oil port size: P/A/B: G1/2 T/C: G3/4 ; Invert the orifice at an angle of $1 \times 45^\circ$;
6. Each inlet and outlet should be sealed with plastic oil plugs to prevent dust;
7. The form, length, and color of the handle cover are determined according to user requirements.

				设计		图样标记	4P80-OT	
				制图		重量		
				描图				
				校对		共张	第张	HYDRAULIC VALVE
				工艺检查				
				标准化检查				
标记	更改内容或依据	更改人	日期	审核				