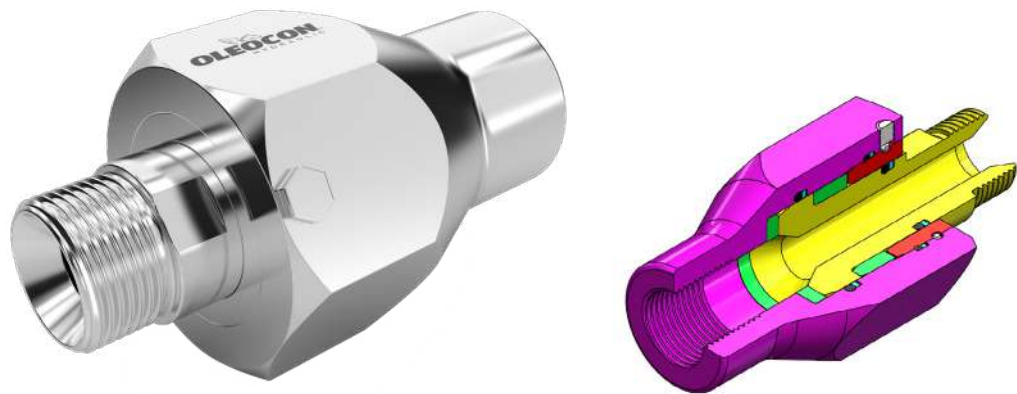


SWIWEL JOINT - SJS SERIES STRAIGHT



TECHNICAL FEATURES AND OPTIONS



Working Temperature
-20 °C / +80 °C



Material
Carbon Steel
Stainless Steel
Brass



Operating Pressure
Up to 350 Bar



Available Threads
BSP



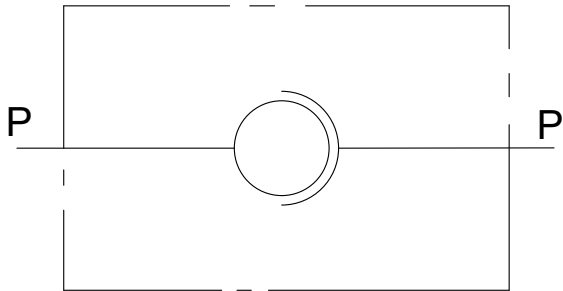
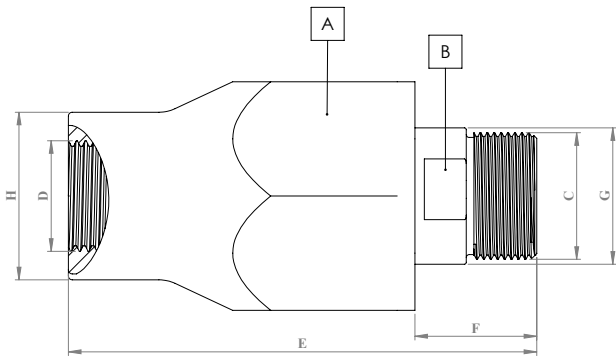
Available Sizes
From 1/4" to 1"



Sealing Description
NBR - FKM

CLICK HERE
FOR 3D SECTION

TECHNICAL DRAWING

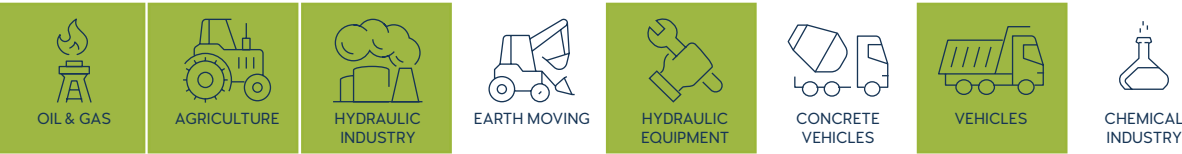


BODY SIZE	DESCRIPTION	Hex			THREAD SIZE		LENGTH			DIAMETER			WEIGHT	
			mm	inch				mm	inch		mm	inch	kg	lbs
06	SJS-6-G14M	A	32	1.25	C	1/4	E	73.5	2.89	G	16	0.62	0.27	0.59
		B	13	0.51	D	1/4	F	19.5	0.76	H	24	0.94		
10	SJS-10-G38M	A	36	1.41	C	3/8	E	81	3.18	G	19	0.74	0.35	0.77
		B	15	0.59	D	3/8	F	22	0.86	H	26	1.02		
12.5	SJS-12-G12M	A	41	1.61	C	1/2	E	93	3.66	G	23	0.90	0.53	1.16
		B	19	0.74	D	1/2	F	25	0.98	H	32	1.25		
19	SJS-19-G34M	A	55	2.16	C	3/4	E	108	4.25	G	29	1.14	1.06	2.33
		B	27	1.06	D	3/4	F	28	1.10	H	38	1.49		
25	SJS-25-G1M	A	60	2.36	C	1	E	123	4.84	G	36	1.41	1.35	2.97
		B	32	1.25	D	1	F	32	1.25	H	44	1.73		

ISO 8434-6 - ISO 1179-1

BODY SIZE	WORKING PRESSURE		BURST PRESSURE	
	MPa	PSI	MPa	PSI
6	35	5076	100	14504
10	35	5076	100	14504
12,5	35	5076	100	14504
19	30	4351	100	14504
25	30	4351	100	14504

MAIN APPLICATIONS



INFORMATION

- SJS Series Hydraulic Straight Swivel Joints are mounted between a moving hose end and a fixed component to prevent hose damage by compensating the torsion and twisting.
- SJS Series Hydraulic Straight Swivel Joints are not suitable for fast or continuous rotations.They are suitable for slow rotations and high pressure applications.
- Safe and easy-to-use.

WARNING

- Please do not expose to abnormal operating conditions. (E.g. oscillations, impulse pressures, water hammering, cavitation, and proportions of solid materials and abrasives)
- Please do not touch the product, when the working temperature is lower than -20°C or higher than +50°C.
- Make sure the system pressure is below the maximum working pressure.
- Please ensure the cleanliness of all connection surfaces to avoid dirt or dust accumulation in the circuit.
- Please ensure that the OLEOCON product you have chosen is compatible with the temperature , material and pressure requirements of your system.
- Please contact OLEOCON technical support for any further questions.