

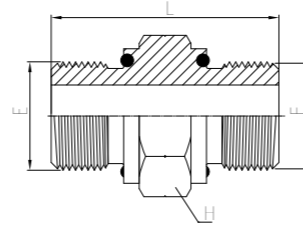
Dimensions shown may be changed without prior notice

Dimensions shown may be changed without prior notice

1G

BSP MALE O-RING

//Steel wire braided hose fittings
 //Material:carbon steel \ SS304 \ SS316



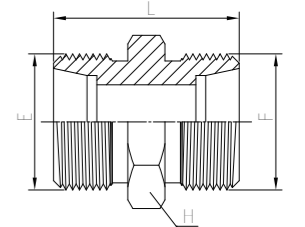
| # Part Number | Thread E inch | Thread F inch | L | | H mm | Unit Price \$ |
|------------------|------------------|------------------|------|----|---------|------------------|
| | | | inch | mm | | |
| 1G-02 | G1/8"X28 | G1/8"X28 | 1.10 | 28 | 14 | * |
| 1G-04 | G1/4"X19 | G1/4"X19 | 1.26 | 32 | 19 | * |
| 1G-06 | G3/8"X19 | G3/8"X19 | 1.42 | 36 | 22 | * |
| 1G-08 | G1/2"X14 | G1/2"X14 | 1.73 | 44 | 27 | * |
| 1G-12 | G3/4"X14 | G3/4"X14 | 1.89 | 48 | 32 | * |
| 1G-16 | G1"X11 | G1"X11 | 2.17 | 55 | 41 | * |
| 1G-20 | G1-1/4"X11 | G1-1/4"X11 | 2.40 | 61 | 50 | * |
| 1G-24 | G1-1/2"X11 | G1-1/2"X11 | 2.52 | 64 | 55 | * |

Note: The unit price of the product is the price of carbon steel galvanised

1C/1D

METRIC 24° L.T

//Steel wire braided hose fittings
 //Material:carbon steel \ SS304 \ SS316



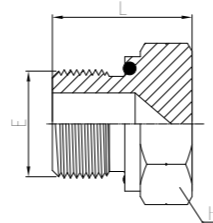
| # Part Number | Thread E inch | Thread F inch | L | | H mm | Unit Price \$ |
|------------------|------------------|------------------|------|----|---------|------------------|
| | | | inch | mm | | |
| 1C-12 | M12X1.5 | M12X1.5 | 0.94 | 24 | 12 | * |
| 1C-14 | M14X1.5 | M14X1.5 | 0.98 | 25 | 14 | * |
| 1C-16 | M16X1.5 | M16X1.5 | 1.06 | 27 | 17 | * |
| 1C-18 | M18X1.5 | M18X1.5 | | | 19 | * |
| 1C-22 | M22X1.5 | M22X1.5 | 1.18 | 30 | 24 | * |
| 1C-26 | M26X1.5 | M26X1.5 | 1.22 | 31 | 27 | * |
| 1C-30 | M30X2 | M30X2 | 1.38 | 35 | 32 | * |
| 1C-36 | M36X2 | M36X2 | 1.42 | 36 | 41 | * |
| 1C-45 | M45X2 | M45X2 | 1.61 | 41 | 46 | * |
| 1C-52 | M52X2 | M52X2 | 1.69 | 43 | 55 | * |
| 1D-14 | M14X1.5 | M14X1.5 | 1.18 | 30 | 14 | * |
| 1D-16 | M16X1.5 | M16X1.5 | 1.26 | 32 | 17 | * |
| 1D-18 | M18X1.5 | M18X1.5 | 1.26 | 32 | 19 | * |
| 1D-20 | M20X1.5 | M20X1.5 | 1.34 | 34 | 22 | * |
| 1D-22 | M22X1.5 | M22X1.5 | 1.50 | 38 | 24 | * |
| 1D-24 | M24X1.5 | M24X1.5 | 1.50 | 38 | 27 | * |
| 1D-30 | M30X2 | M30X2 | 1.73 | 44 | 32 | * |
| 1D-36 | M36X2 | M36X2 | 1.97 | 50 | 41 | * |
| 1D-42 | M42X2 | M42X2 | 2.13 | 54 | 46 | * |
| 1D-52 | M52X2 | M52X2 | 2.40 | 61 | 55 | * |

Note: The unit price of the product is the price of carbon steel galvanised

4G

BSP MALE O-RING PLUG

//Steel wire braided hose fittings
 //Material:carbon steel \ SS304 \ SS316



| # Part Number | Thread E inch | L | | H mm | Unit Price \$ |
|------------------|------------------|------|------|---------|------------------|
| | | inch | mm | | |
| 4G-04 | G1/4"X19 | 0.75 | 19 | 19 | * |
| 4G-06 | G3/8"X19 | 0.87 | 22 | 22 | * |
| 4G-08 | G1/2"X14 | 1.06 | 27 | 27 | * |
| 4G-12 | G3/4"X14 | 1.16 | 29.5 | 32 | * |
| 4G-16 | G1"X11 | 1.34 | 34 | 41 | * |

Note: The unit price of the product is the price of carbon steel galvanised

059

HYDRAULIC HOSE FITTING

060

HYDRAULIC HOSE FITTING

Dimensions shown may be changed without prior notice

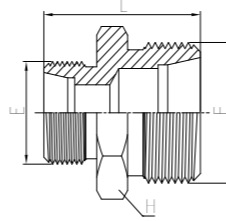
Dimensions shown may be changed without prior notice

1C/1D(Reducer)

METRIC 24° L.T

//Steel wire braided hose fittings

//Material:carbon steel \ SS304 \ SS316



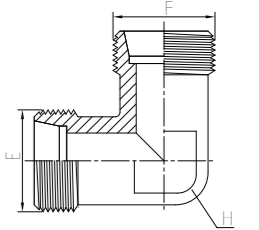
| # Part Number | Thread E inch | Thread F inch | L | | H mm | Unit Price \$ |
|------------------|------------------|------------------|------|----|---------|------------------|
| | | | inch | mm | | |
| 1C-12-14 | M12X1.5 | M14X1.5 | 0.98 | 25 | 14 | * |
| 1C-12-16 | M12X1.5 | M16X1.5 | 1.02 | 26 | 17 | * |
| 1C-12-18 | M12X1.5 | M18X1.5 | 1.06 | 27 | 19 | * |
| 1C-14-18 | M14X1.5 | M18X1.5 | 1.06 | 27 | 19 | * |
| 1C-16-18 | M16X1.5 | M18X1.5 | 1.10 | 28 | 19 | * |
| 1C-16-22 | M16X1.5 | M22X1.5 | 1.14 | 29 | 24 | * |
| 1C-16-26 | M16X1.5 | M26X1.5 | 1.18 | 30 | 27 | * |
| 1C-18-22 | M18X1.5 | M22X1.5 | 1.14 | 29 | 24 | * |
| 1C-18-26 | M18X1.5 | M26X1.5 | 1.18 | 30 | 27 | * |
| 1C-18-30 | M18X1.5 | M30X2 | 1.26 | 32 | 32 | * |
| 1C-22-26 | M22X1.5 | M26X1.5 | 1.22 | 31 | 27 | * |
| 1C-22-30 | M22X1.5 | M30X2 | 1.30 | 33 | 32 | * |
| 1C-26-30 | M26X1.5 | M30X2 | 1.30 | 33 | 32 | * |
| 1C-26-36 | M26X1.5 | M36X2 | 1.34 | 34 | 41 | * |
| 1C-30-36 | M30X2 | M36X2 | 1.42 | 36 | 41 | * |
| 1C-30-45 | M30X2 | M45X2 | 1.54 | 39 | 46 | * |
| 1C-36-45 | M36X2 | M45X2 | 1.54 | 39 | 46 | * |
| 1D-14-16 | M14X1.5 | M16X1.5 | 1.26 | 32 | 17 | * |
| 1D-14-18 | M14X1.5 | M18X1.5 | 1.26 | 32 | 19 | * |
| 1D-14-20 | M14X1.5 | M20X1.5 | 1.34 | 34 | 22 | * |
| 1D-16-18 | M16X1.5 | M18X1.5 | 1.26 | 32 | 19 | * |
| 1D-16-20 | M16X1.5 | M20X1.5 | 1.34 | 34 | 22 | * |
| 1D-18-20 | M18X1.5 | M20X1.5 | 1.34 | 34 | 22 | * |
| 1D-18-22 | M18X1.5 | M22X1.5 | 1.42 | 36 | 24 | * |
| 1D-18-30 | M18X1.5 | M30X2 | 1.57 | 40 | 32 | * |
| 1D-20-22 | M20X1.5 | M22X1.5 | 1.42 | 36 | 24 | * |
| 1D-20-24 | M20X1.5 | M24X1.5 | 1.42 | 36 | 27 | * |
| 1D-20-30 | M20X1.5 | M30X2 | 1.57 | 40 | 32 | * |
| 1D-22-24 | M22X1.5 | M24X1.5 | 1.50 | 38 | 27 | * |
| 1D-24-30 | M24X1.5 | M30X2 | 1.65 | 42 | 32 | * |
| 1D-22-36 | M24X1.5 | M36X2 | 1.81 | 46 | 41 | * |
| 1D-30-36 | M30X2 | M36X2 | 1.89 | 48 | 41 | * |
| 1D-30-42 | M30X2 | M42X2 | 1.97 | 50 | 46 | * |
| 1D-36-42 | M36X2 | M42X2 | 2.05 | 52 | 46 | * |
| 1D-42-52 | M42X2 | M52X2 | 2.32 | 59 | 55 | * |

1C9/1D9

METRIC 24° L.T

//Steel wire braided hose fittings

//Material:carbon steel \ SS304 \ SS316



| # Part Number | Thread E inch | Thread F inch | H mm | Unit Price \$ |
|------------------|------------------|------------------|---------|------------------|
| 1C9-12 | M12X1.5 | M12X1.5 | 12 | * |
| 1C9-14 | M14X1.5 | M14X1.5 | 12 | * |
| 1C9-16 | M16X1.5 | M16X1.5 | 14 | * |
| 1C9-18 | M18X1.5 | M18X1.5 | 17 | * |
| 1C9-22 | M22X1.5 | M22X1.5 | 19 | * |
| 1C9-26 | M26X1.5 | M26X1.5 | 24 | * |
| 1C9-30 | M30X2 | M30X2 | 27 | * |
| 1C9-36 | M36X2 | M36X2 | 36 | * |
| 1C9-45 | M45X2 | M45X2 | 41 | * |
| 1C9-52 | M52X2 | M52X2 | 50 | * |
| 1D9-14 | M14X1.5 | M14X1.5 | 12 | * |
| 1D9-16 | M16X1.5 | M16X1.5 | 14 | * |
| 1D9-18 | M18X1.5 | M18X1.5 | 17 | * |
| 1D9-20 | M20X1.6 | M20X1.5 | 17 | * |
| 1D9-22 | M22X1.5 | M22X1.5 | 19 | * |
| 1D9-24 | M24X1.5 | M24X1.5 | 24 | * |
| 1D9-30 | M30X2 | M30X2 | 27 | * |
| 1D9-36 | M36X2 | M36X2 | 36 | * |
| 1D9-42 | M42X2 | M42X2 | 41 | * |
| 1D9-52 | M52X2 | M52X2 | 50 | * |

Note: The unit price of the product is the price of carbon steel galvanised

061

HYDRAULIC HOSE FITTING

062

HYDRAULIC HOSE FITTING