

SWIWEL JOINT - SJE SERIES ELBOW



CLICK HERE
FOR 3D SECTION

TECHNICAL FEATURES AND OPTIONS



Working Temperature
-20 °C / +80 °C



Material
Carbon Steel
Stainless Steel
Brass



Operating Pressure
Up to 350 Bar



Available Threads
BSP



Available Sizes
From 1/4" to 1"



Sealing Description
NBR - FKM

MAIN APPLICATIONS



OIL & GAS



AGRICULTURE



HYDRAULIC
INDUSTRY



EARTH MOVING



HYDRAULIC
EQUIPMENT



CONCRETE
VEHICLES

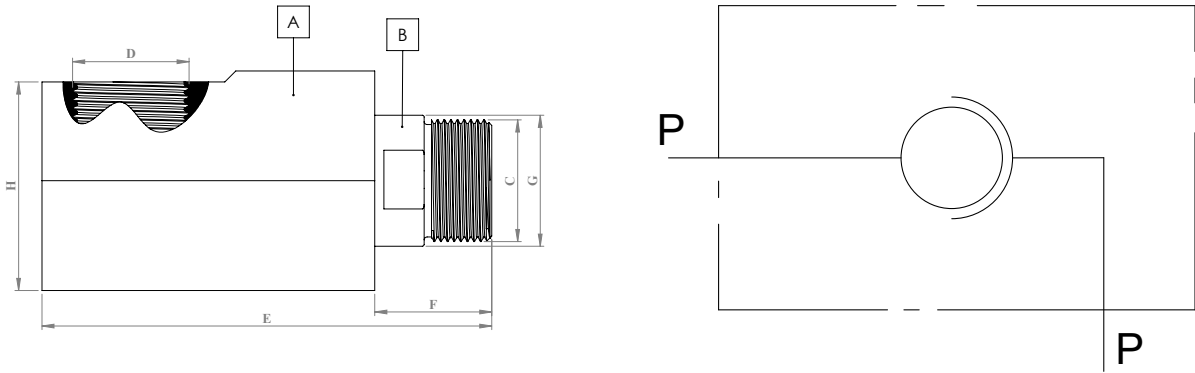


VEHICLES



CHEMICAL
INDUSTRY

TECHNICAL DRAWING



BODY SIZE	DESCRIPTION	Hex			THREAD SIZE	LENGTH			DIAMETER			WEIGHT	
			mm	inch			mm	inch		mm	inch	kg	lbs
06	SJE-6-G14M	A	32	1,25	C 1/4	E	73,5	2,89	G	16	0,62	0,32	0,70
		B	13	0,51	D 1/4	F	19,5	0,76	H	31	1,22		
10	SJE-10-G38M	A	36	1,41	C 3/8	E	81	3,18	G	19	0,74	0,44	0,96
		B	15	0,59	D 3/8	F	22	0,86	H	35	1,37		
12,5	SJE-12-G12M	A	41	1,61	C 1/2	E	93	3,66	G	23	0,90	0,64	1,40
		B	19	0,74	D 1/2	F	25	0,98	H	39	1,53		
19	SJE-19-G34M	A	55	2,16	C 3/4	E	108	4,25	G	29	1,14	1,38	3,03
		B	27	1,06	D 3/4	F	28	1,10	H	53	2,08		
25	SJE-25-G1M	A	60	2,36	C 1	E	123	4,84	G	36	1,41	1,78	3,91
		B	32	1,25	D 1	F	32	1,25	H	57	2,24		

ISO 8434-6 - ISO 1179-1

BODY SIZE	WORKING PRESSURE		BURST PRESSURE	
	MPa	PSI	MPa	PSI
6	35	5076	100	14504
10	35	5076	100	14504
12,5	35	5076	100	14504
19	30	4351	100	14504
25	30	4351	100	14504

- SJE Series Hydraulic Elbow Swivel Joints are mounted between a moving hose end and a fixed component to prevent hose damage by compensating the torsion and twisting.
- SJE Series Hydraulic Elbow Swivel Joints are not suitable for fast or continuous rotations.They are suitable for slow rotations and high pressure applications.
- Safe and easy-to-use.

- Please do not expose to abnormal operating conditions. (E.g. oscillations, impulse pressures, water hammering, cavitation, and proportions of solid materials and abrasives)
- Please do not touch the product, when the working temperature is lower than -20°C or higher than +50°C.
- Make sure the system pressure is below the maximum working pressure.
- Please ensure the cleanliness of all connection surfaces to avoid dirt or dust accumulation in the circuit.
- Please ensure that the OLEOCON product you have chosen is compatible with the temperature , material and pressure requirements of your system.
- Please contact OLEOCON technical support for any further questions.