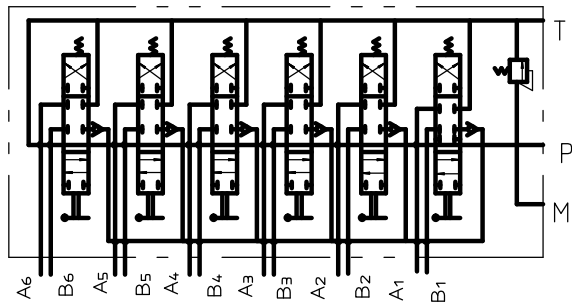


液压原理图



Technical requirements:

1. Rated flow rate:80L/min
2. Maximum working pressure:25MPa;
3. Safety valve setting pressure:20MPa;
4. Each moving part must be flexible and free from any sticking or jamming;
5. Oil port size:P/A/B:G1/2 T/C:G3/4 ; Invert the orifice at an angle of 1x45 °;
6. Each inlet and outlet should be sealed with plastic oil plugs to prevent dust;
7. The form, length, and color of the handle cover are determined according to user requirements.

- 1

			设计		图样标记	6P80-OT	
			制图		重量		
			描图				
			校对		共张	第张	HYDRAULIC VALVE
			工艺检查				
			标准化检查				
标记	更改内容或依据	更改人	日期	审核			