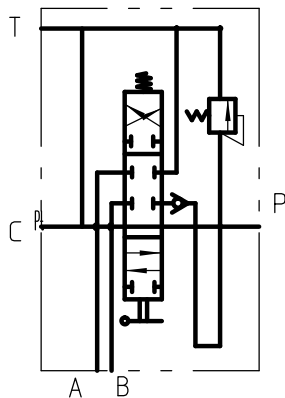


液压原理图



Technical requirements:

1. Rated flow rate:80L/min
2. Maximum working pressure:25MPa;
3. Safety valve setting pressure:20MPa;
4. Each moving part must be flexible and free from any sticking or jamming;
5. Oil port size:P/A/B:G1/2 T/C:G3/4 ; Invert the orifice at an angle of 1x45°;
6. Each inlet and outlet should be sealed with plastic oil plugs to prevent dust;
7. The form, length, and color of the handle cover are determined according to user requirements.

			设计		图样标记			1P80-OT
			制图		重量		比例	
			描图					HYDRAULIC VALVE
			校对		共张		第张	
			工艺检查					
			标准化检查					
标记	更改内容或依据	更改人	日期	审核				