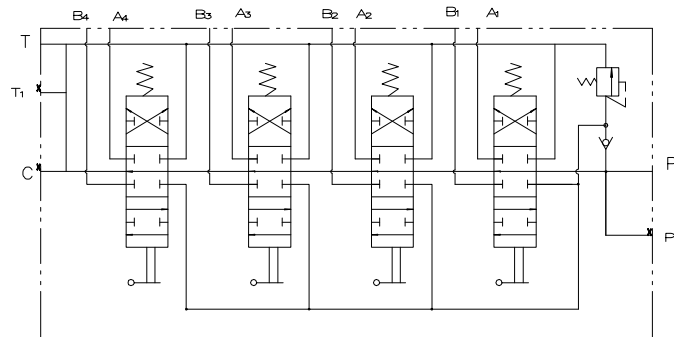


液压原理图



Technical requirements:

1. Rated flow rate: 40L/min, maximum flow rate: 55L/min;
2. Maximum working pressure: 25MPa;
3. Safety valve setting pressure: 20MPa;
4. Each moving part must be flexible and free from any sticking or jamming;
5. Oil port size: P, A, B, T, C oil ports are all G1/2; Invert the orifice at an angle of $1 \times 45^\circ$;
6. Each inlet and outlet should be sealed with plastic oil plugs to prevent dust;
7. The form, length, and color of the handle cover are determined according to user requirements.

设计		图样标记				P40-40T
制图		重量		比例		
审核		共张		第张		多路阀 外型尺寸图
工艺检查						
标准化检查						
标记	更改内容或依据	更改人	日期	审核		